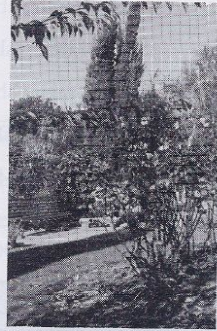
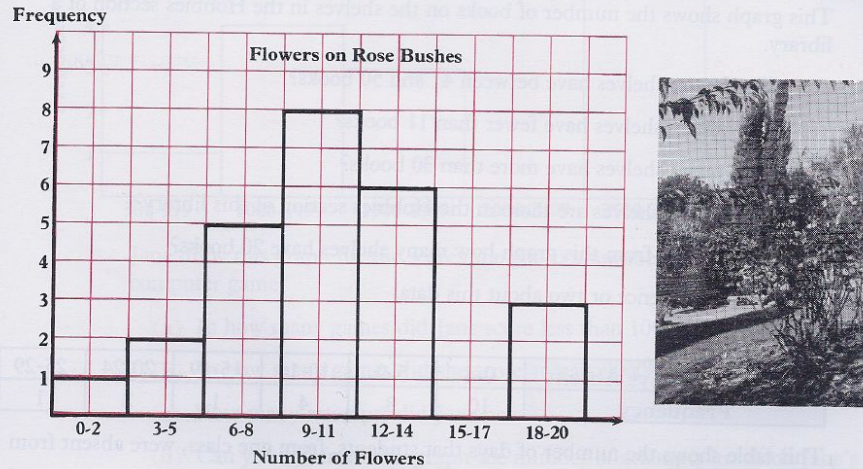


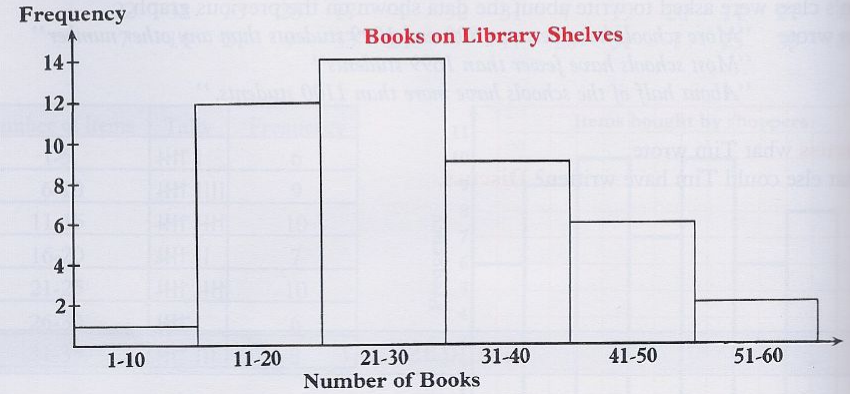
1.



This graph shows the number of flowers on the rose bushes in Rowanway Park.

- (a) How many rose bushes have between 6 and 8 flowers?
- (b) How many rose bushes have between 15 and 17 flowers?
- (c) How many rose bushes have fewer than 9 flowers?
- (d) How many rose bushes are there in Rowanway Park?
- (e) Write a sentence or two about this data.

2.



This graph shows the number of books on the shelves in the Hobbies section of a library.

- (a) How many shelves have between 41 and 50 books?
- (b) How many shelves have fewer than 11 books?
- (c) How many shelves have more than 30 books?
- (d) How many shelves are there in the Hobbies section of this library?
- (e) Can you tell from this graph how many shelves have 20 books?
- (f) Write a sentence or two about this data.

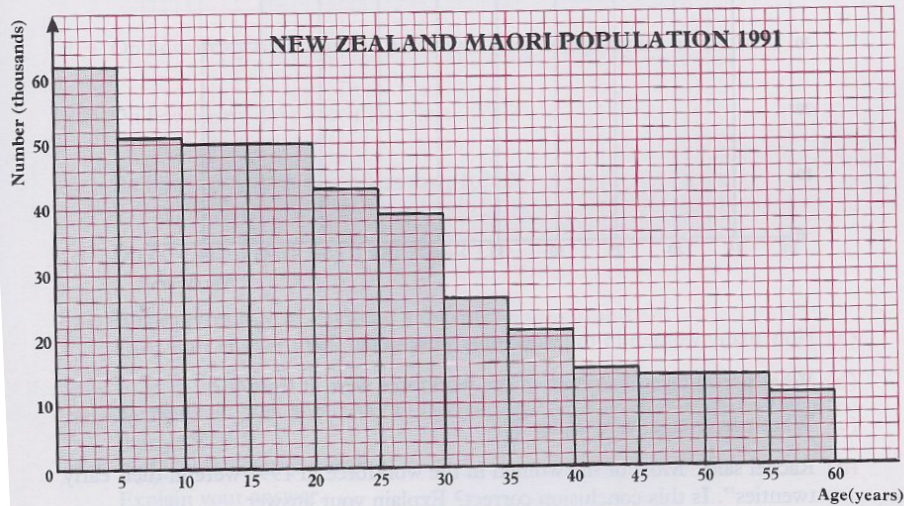
3.

Number of Days Absent	0-4	5-9	10-14	15-19	20-24	25-29
Frequency	10	8	4	1	2	1

This table shows the number of days that students, from one class, were absent from school during the last year.

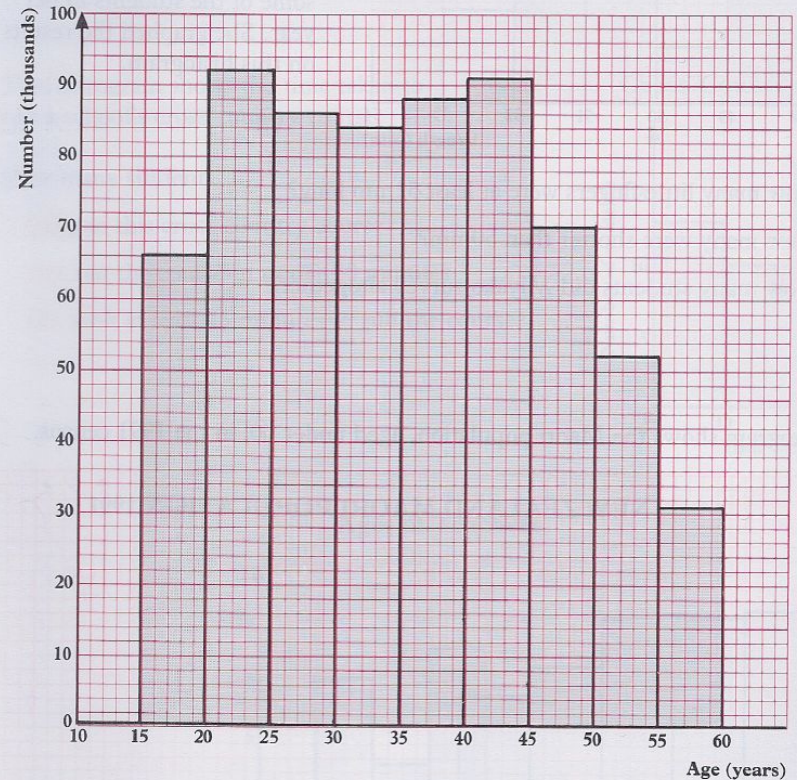
Draw a histogram for this data.

4. This histogram shows the Maori population, aged under 60, in the 1991 census.



- How many Maori, under age 60, lived in New Zealand in 1991?
- How many of these were under 40?
- How many were at least 20 years of age?
- What percentage were at least 20? Give your answer to the nearest percent.
- Laurie said "Most Maori shown by this histogram were under 30". Is this statement correct?

5. **Women in the workforce in 1991**



- How many women in the workforce were under 30?
- What percentage of women in the workforce were at least 40?
- What percentage were under 20?
- Rachel said "Most of the women in the workforce in 1991 were in their early twenties". Is this conclusion correct? Explain your answer.